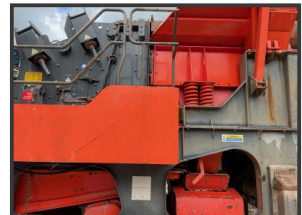
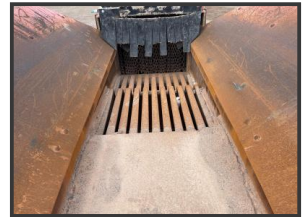




**CRUSHERS, SCREENERS  
& HEAVY PLANT SALES**

# Sandvik QI340



## £POA

Caterpillar C13 Tier 111  
Weight 43,340 Kg  
Feed Opening 1290x950mm / 51x37"  
VGF feeder Unit ,  
Hydraulic Hopper  
Side Discharge Conveyor  
Remote Control  
**Product Details**

<b>Product Details</b>	
<b>Category/Type</b>	<b>Crushers</b>
<b>Make</b>	<b>Sandvik</b>
<b>Model</b>	<b>QI340</b>
<b>Year</b>	<b>2011</b>
<b>Hours</b>	<b>7422</b>